

# November 2017 Letting Report

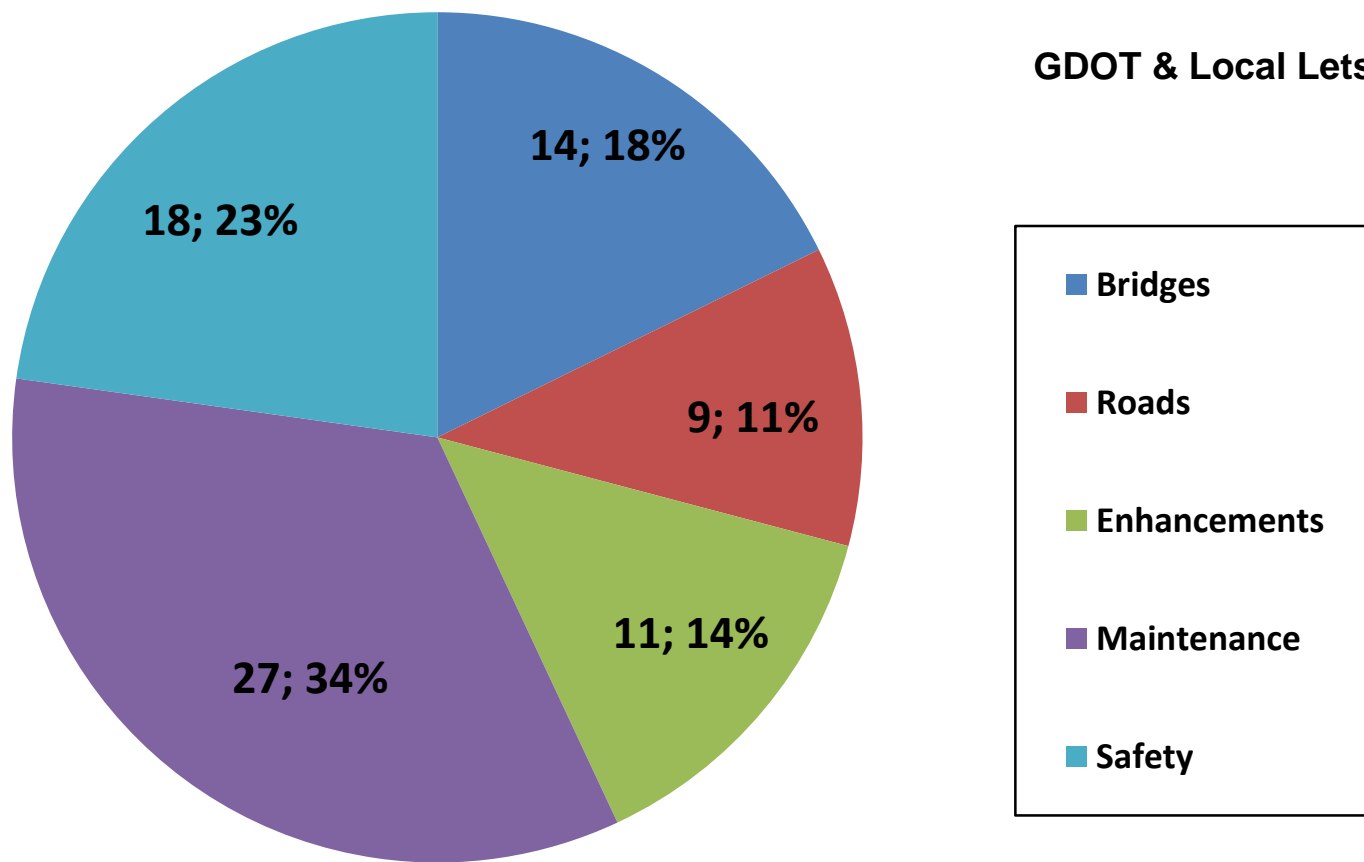
Albert V. Shelby, III  
Director of Program Delivery

October 19, 2017

# Fiscal Year 2018 Letting Report

## Number of Projects Let in FY 2018

(Contractor Low Bid Award Data)



**Total = 79**

***Does not include LMIG Projects***

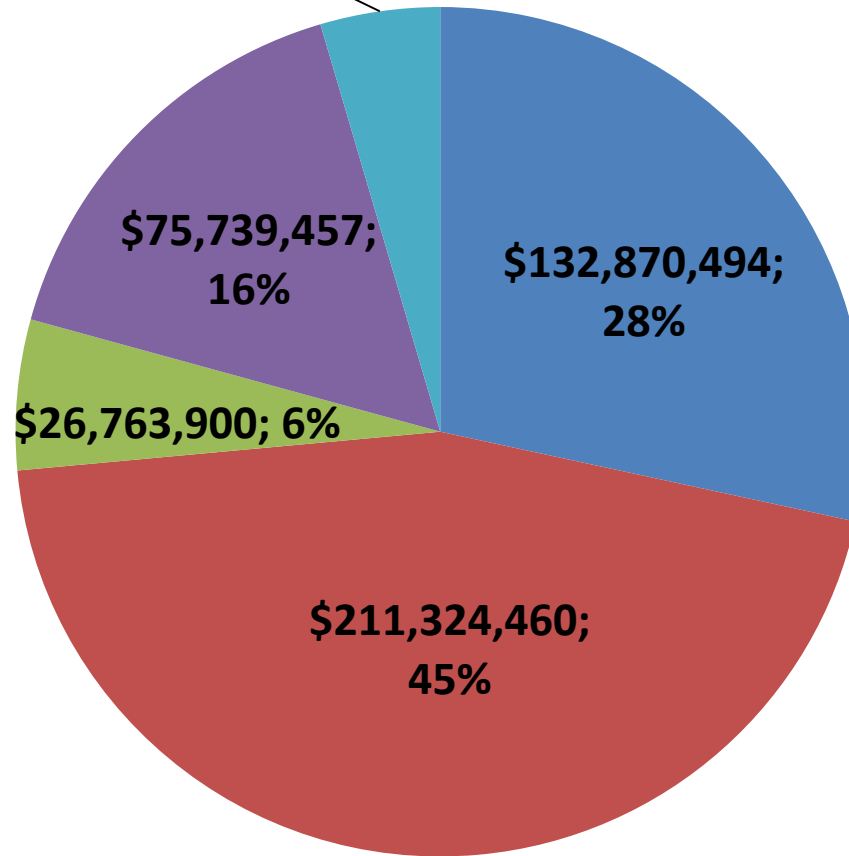
*As of October 10, 2017  
Source Construction Bidding Administration*

# Fiscal Year 2018 Letting Report

## Dollar Amount of Projects Let in FY 2018

(Contractor Low Bid Award Data)

\$21,315,964; 5%



GDOT & Local Lets

**Total = \$468,014,275**

***Does not include LMIG Projects***

*As of October 10, 2017  
Source Construction Bidding Administration*

## September 2017 Letting Results

Summary	Presented to GDOT Board (Includes Adjustments)	Low Bid (Awarded to Contractor)	Low Bid w/Adjustments (Total Project Obligation)
GDOT Let (Project Count)	18	13	13
GDOT Let (Dollars)	\$237,814,593	\$172,432,328	\$175,961,402
Local Let (Project Count)	7	N/A Local Let	N/A Local Let
Local Let (Dollars)	\$11,492,318	N/A Local Let	N/A Local Let

\*Low Bid Award Amount includes the Deferred and Awarded projects.  
Does not include Engineering and Inspection, Utilities, Liquid AC, Incentives, LMIG and Rejected projects.

# **GDOT and Local Let Projects**

## November 2017 Letting

# GDOT and Local Let Projects

## November 2017 Letting

Project ID	Description	Primary County	Primary Work Type	Congressional District	Project Let By	Project Sponsor
M004601	SR 520 FROM COLLEGE CREEK TO 0.08 MI E OF SR 25/303	GLYNN	Resurface & Maintenance	001	DOT	GDOT
M004831	SR 4 FM .05 MI N OF BEACH TIMBER RD TO .27 MI S OF HERON RD	BACON	Resurface & Maintenance	001	DOT	GDOT
M005127	SR 4 FROM FLORIDA STATE LINE TO S OF CS 449/EULA STREET	CHARLTON	Resurface & Maintenance	001	DOT	GDOT
M005338	SR 4 SO @ 1 LOC & SR 26 @ 1 LOC - BRIDGE PRESERVATION	CHARLTON	Bridges	001	DOT	GDOT
M005362	SR 4/US 1 FM S OF CR 141/FULFORD RD TO N OF CR 74/LOVETT RD	WARE	Resurface & Maintenance	001	DOT	GDOT
M005618	SR 21 SPUR FROM SR 21 TO DEAD END	CHATHAM	Resurface & Maintenance	001	DOT	GDOT
0007887	CR 33/2ND AVE @ HANNAHATCHEE CREEK 0.5 MI N OF OMAHA	STEWART	Bridges	002	DOT	GDOT
<b>442951-**</b>	SR 234 @ CHICKASAWHATCHEE CREEK 8 MI NE OF LEARY	CALHOUN	Bridges	002	DOT	GDOT
M005068	SR 7 FROM CS 591/27TH AVE TO DOOLY COUNTY LINE	CRISP	Resurface & Maintenance	002	DOT	GDOT
M005432	I-75 @ 9 LOCS IN BIBB COUNTY - BRIDGE PRESERVATION	BIBB	Bridges	002	DOT	GDOT

**\*\*Bridge Bond Project**

# GDOT and Local Let Projects

## November 2017 Letting

Project ID	Description	Primary County	Primary Work Type	Congressional District	Project Let By	Project Sponsor
M005612	SR 38/US 84 FROM SR 37 TO SEMINOLE COUNTY LINE	EARLY	Resurface & Maintenance	002	DOT	GDOT
M005680	SR 22 @ 3 LOCS & I-185 @ 1 LOC - BRIDGE PRESERVATION	MUSCOGEE	Bridges	002, 003	DOT	GDOT
0010613	SR 54; CR 106/CR 111/LESTER RD & PATH NEAR PIEDMONT HOSPITAL	FAYETTE	TE-Bike/Ped Facility	003	LOC	Fayetteville
0013646	I-185 FM TROUP CO LINE TO MUSCOGEE CO LINE - CABLE BARRIERS	HARRIS	Barriers	003	DOT	GDOT
0013657	I-85 FM ALABAMA STATE LINE TO MERIWETHER CO - CABLE BARRIERS	TROUP	Barriers	003	DOT	GDOT
M004973	SR 138 FROM CS 2000/SIGMAN ROAD TO NEWTON COUNTY LINE	ROCKDALE	Resurface & Maintenance	004	DOT	GDOT
0010640	I-75 NB RAMP FROM I-75 TO CR 1516/C W GRANT PKWY	CLAYTON	TE-Landscape/Beau tify	005	LOC	Clayton County
M005648	SR 6 FROM DOUGLAS COUNTY LINE TO SR 70	FULTON	Resurface & Maintenance	005	DOT	GDOT
M005649	SR 8/US 78 FROM COBB COUNTY LINE TO I-75/I-85	FULTON	Resurface & Maintenance	005	DOT	GDOT
M005681	SR 10 @1 LOC; SR 13 @1 LOC & I-75 @2 LOC-BRIDGE PRESERVATION	FULTON	Bridges	005	DOT	GDOT

# GDOT and Local Let Projects

## November 2017 Letting

Project ID	Description	Primary County	Primary Work Type	Congressional District	Project Let By	Project Sponsor
0012670	SR 3 @ 6 LOC; SR 54 @ 1 LOC; SR 138 @ 1 LOC & SR 314 @ 3 LOC	CLAYTON	Signals	005, 013	DOT	GDOT
M005494	SR 20 FM CHEROKEE COUNTY LINE TO CS 523/W COURTHOUSE SQUARE	FORSYTH	Resurface & Maintenance	007, 009	DOT	GDOT
<b>0007046**</b>	SR 83 @ TOWALIGA RIVER 7 MI N OF FORSYTH	MONROE	Bridges	008	DOT	GDOT
0010592	EAST MAIN FM COLLEGE TO HAGAN & HAGAN FM EAST MAIN TO GRACE	LOWNDES	TE-Bike/Ped Facility	008	LOC	Hahira
0012846	SR 7BU; SR 7SB; SR 38 & SR 38WE @ 15 LOCS - SIGNAL UPGRADES	LOWNDES	Signals	008	DOT	GDOT
M004948	SR 112 FROM WILCOX COUNTY LINE TO SR 11	PULASKI	Resurface & Maintenance	008	DOT	GDOT
0000315	SR 52 @ SR 183	DAWSON	Roundabout	009	DOT	GDOT
M004958	SR 323 FROM SR 11 TO SR 52	HALL	Resurface & Maintenance	009	DOT	GDOT
M004978	SR 369 FROM FORSYTH COUNTY LINE TO SR 53	HALL	Resurface & Maintenance	009	DOT	GDOT
0015202	SR 10 LOOP @ 2 LOCS IN CLARKE & OCONEE COUNTY- CABLE BARRIERS	CLARKE	Barriers	009, 010	DOT	GDOT

**\*\*Bridge Bond Project**



# GDOT and Local Let Projects

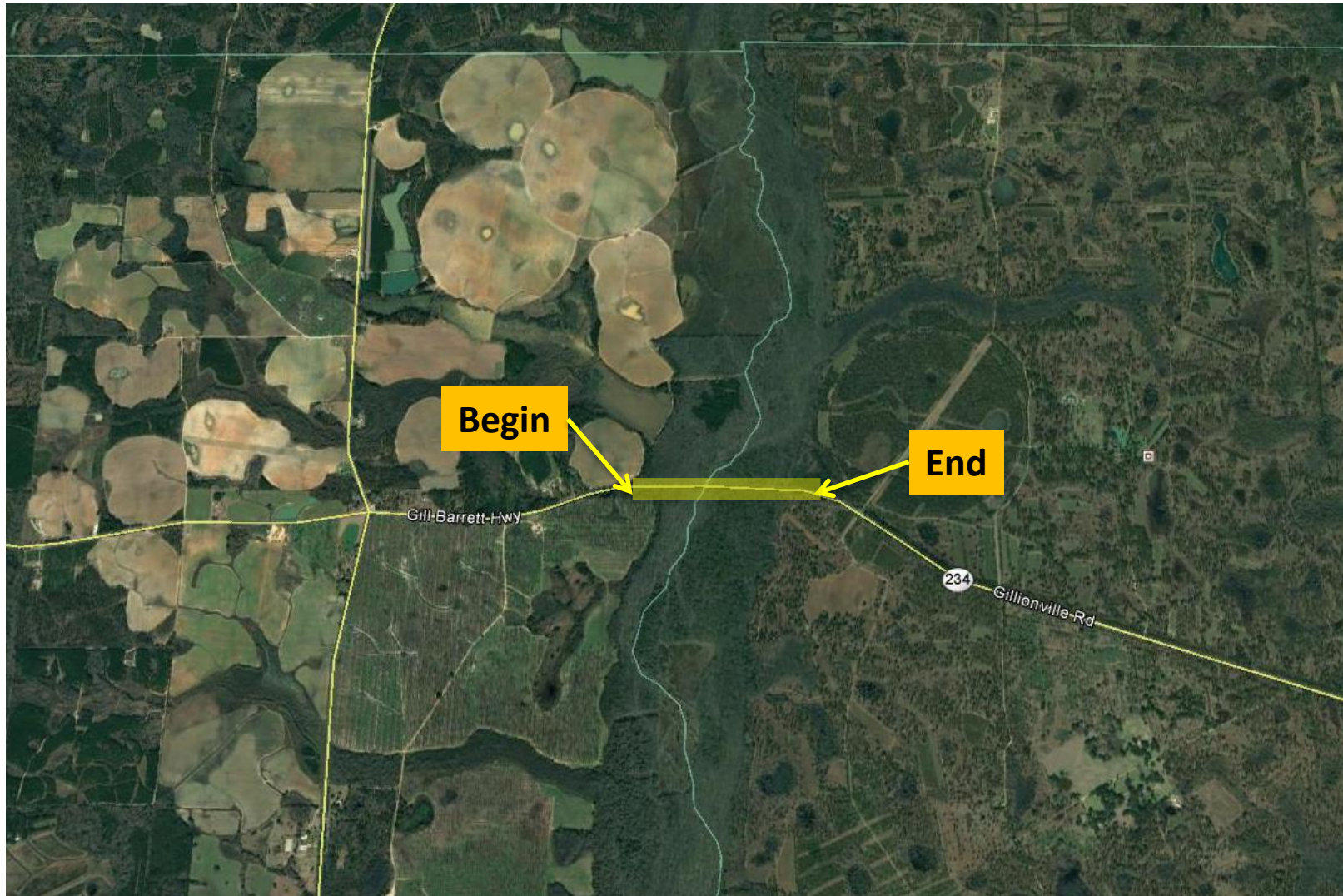
## November 2017 Letting

Project ID	Description	Primary County	Primary Work Type	Congressional District	Project Let By	Project Sponsor
0010715	TENNILLE FREIGHT DEPOT REHAB & STREETScape @ 4 LOCS - PH II	WASHINGTON	TE-Rehab Hist Trans Bldg	010	LOC	Tennille
M005627	SR 5BU FROM SR 20 TO I-575	CHEROKEE	Resurface & Maintenance	011	DOT	GDOT
M005707	SR 20 FROM CR 2648/BROOKE PARK DR TO CR 2818/MTN FALLS WAY	CHEROKEE	Resurface & Maintenance	011	DOT	GDOT
0015580	CR 276/MARVIN GRIFFIN ROAD FROM SR 56 TO DOUG BARNARD PKWY	RICHMOND	Widening	012	DOT	Augusta
M005619	SR 73 FROM CR 233/S ACCESS ROAD TO SOUTH CAROLINA STATE LINE	SCREVEN	Resurface & Maintenance	012	DOT	GDOT
M005646	SR 5 FROM CR 633/YORK DRIVE TO I-20	DOUGLAS	Resurface & Maintenance	013	DOT	GDOT
M005650	SR 8/US 78 FM CS 378/ROYAL IND BLVD TO CR 2405/ZANOLA DR	COBB	Resurface & Maintenance	013	DOT	GDOT
M005692	SR 136 @ NS #725782V IN TRENTON	DADE	Bridges	014	DOT	GDOT

# **SR 234 @ CHICKASAWHATCHEE CREEK 8 MI NE OF LEARY**

## **Bridge Replacement Project in Calhoun and Dougherty Counties**

### **Congressional District 2**





# **SR 234 @ CHICKASAWHATCHEE CREEK 8 MI NE OF LEARY**

## **Bridge Replacement Project in Calhoun and Dougherty Counties**

### **Congressional District 2 (Continued)**





# **SR 54; CR 106/CR 111/LESTER RD & PATH NEAR PIEDMONT HOSPITAL Enhancement Project in Fayette County Congressional District 3**





# **I-185 FM TROUP CO LINE TO MUSCOGEE CO LINE - CABLE BARRIERS**

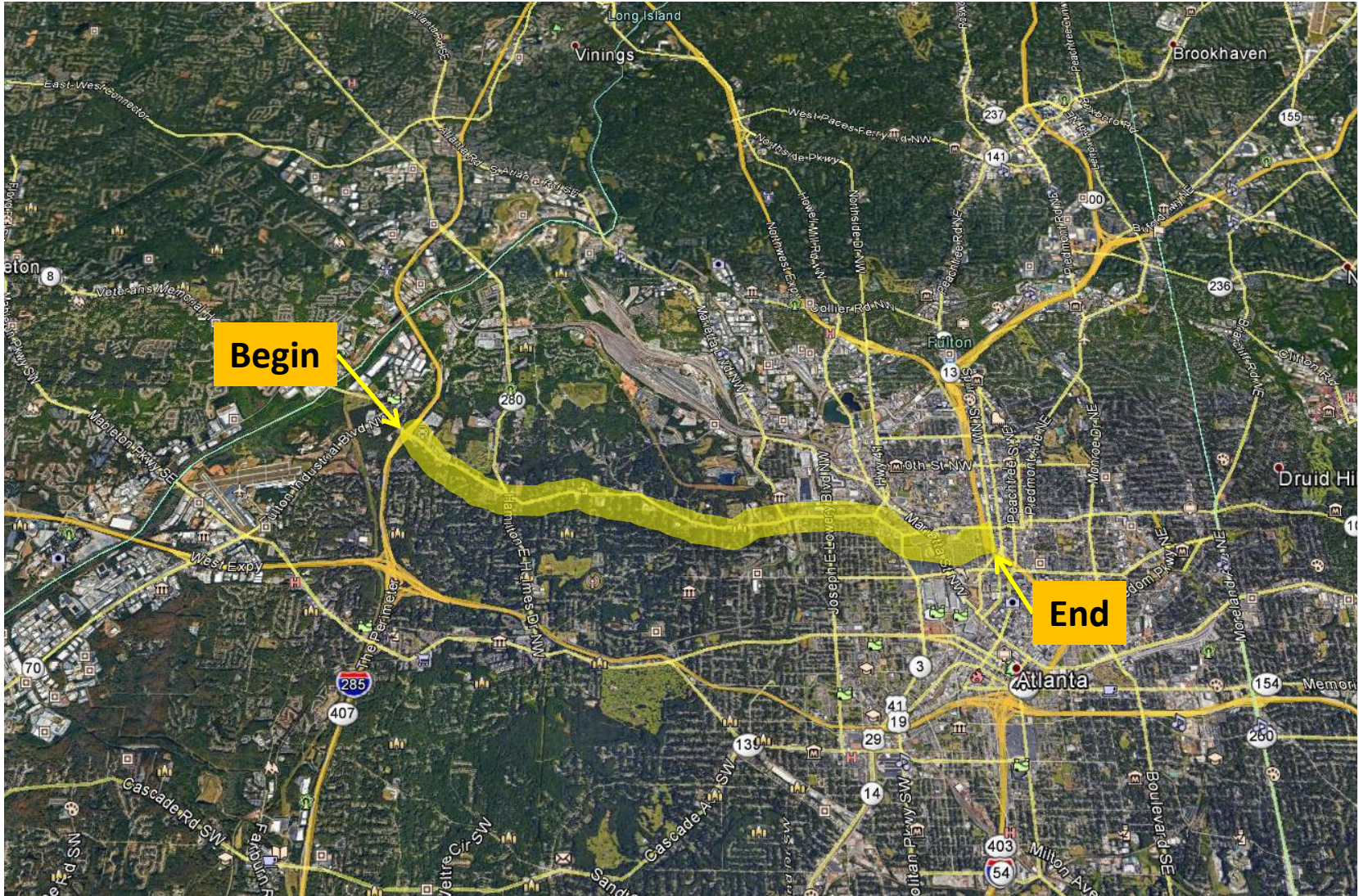
## **Safety Project in Harris County**

### **Congressional District 3**





## Congressional District 5





# **I-75 NB RAMP FROM I-75 TO CR 1516/C W GRANT PKWY Enhancement Project in Clayton County Congressional District 5**





# **SR 83 @ TOWALIGA RIVER 7 MI N OF FORSYTH**

## **Bridge Replacement Project in Monroe County**

### **Congressional District 8**





**SR 83 @ TOWALIGA RIVER 7 MI N OF FORSYTH  
Bridge Replacement Project in Monroe County  
Congressional District 8 (Continued)**





## **SR 52 @ SR 183**

### **Roundabout Project in Dawson County**

### **Congressional District 9**





## **SR 52 @ SR 183 Roundabout Project in Dawson County Congressional District 9**





# **CR 276/MARVIN GRIFFIN ROAD FROM SR 56 TO DOUG BARNARD PKWY**

## **Widening Project in Richmond County**

### **Congressional District 12**





# **I-16 FROM I-95 TO I-516 Widening Project in Chatham County Congressional District 1**

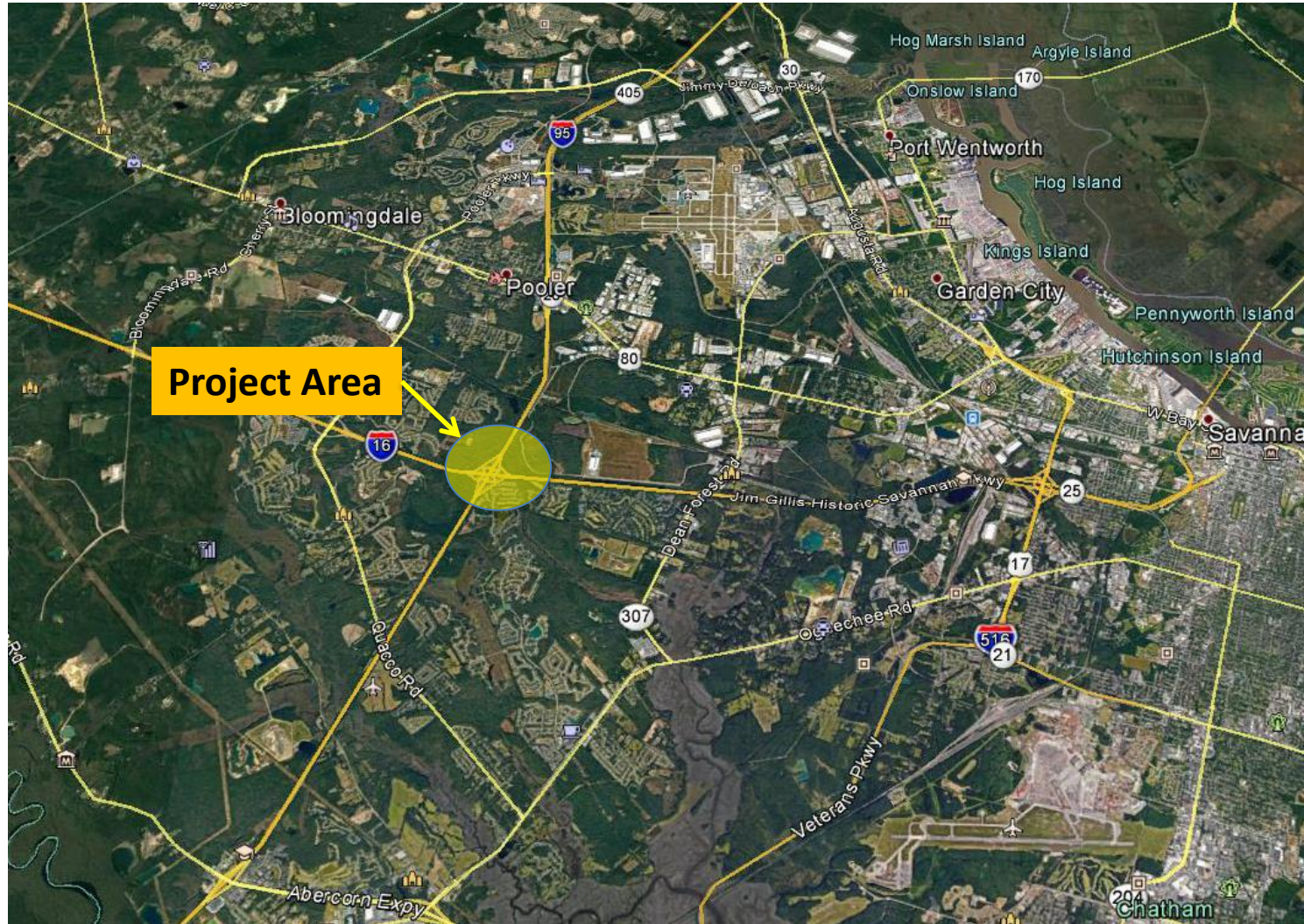




# **I-16 @ I-95 INTERCHANGE RECONSTRUCTION**

## **Interchange Project in Chatham County**

### **Congressional District 1**





# **I-16 @ I-95 INTERCHANGE RECONSTRUCTION Interchange Project in Chatham County Congressional District 1 (Continue)**



To  
South  
Carolina  
←

To Savannah ↑

Dean Forest Rd.

Harmon Road

Southbridge Blvd.

95

16

To  
Florida  
→

↓ To Macon

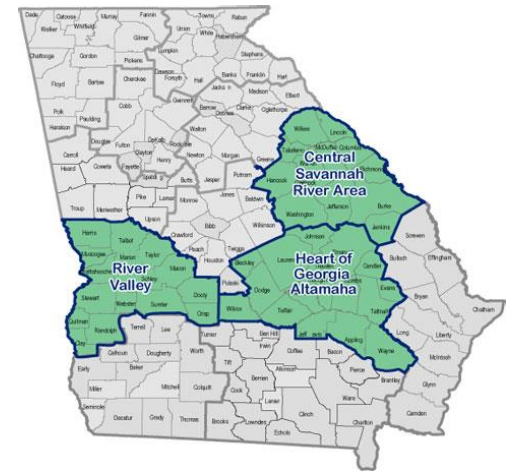


# November 2017 Letting Proposed TIA Projects

**Kelvin Mullins**

**State TIA Administrator**

**October 17, 2017**





# TIA Projects

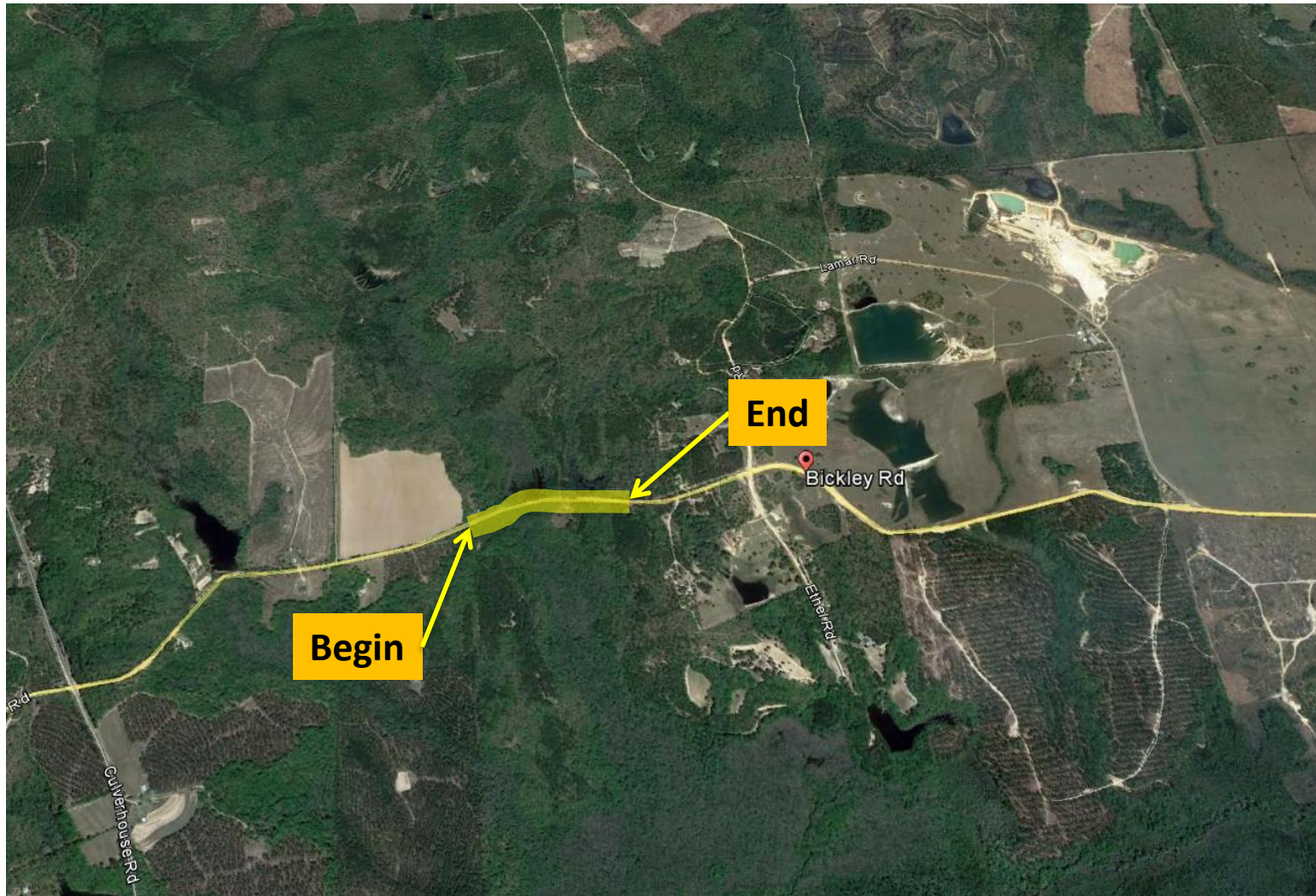
## November 2017 Letting

Project ID	Description	Primary County	Primary Work Type	Congressional District	Project Let By	TIA Region
0011441	CR 84/BICKLEY ROAD @ PATSILIGIA CREEK TRIBUTARY - TIA	TAYLOR	Bridges	002	DOT	River Valley Regional
0008301	CR 82/BETHANY CHURCH ROAD @ NORTH FORK OGEECHEE RIVER	TALIAFERRO	Bridges	010	DOT	Central Savannah River Area

# **CR 84/BICKLEY ROAD @ PATSILIGIA CREEK TRIBUTARY - TIA**

## **Bridge Replacement in Taylor County**

### **Congressional District 2 - River Valley Regional**





# **CR 82/BETHANY CHURCH ROAD @ NORTH FORK OGEECHEE RIVER**

## **Bridge Replacement in Taliaferro County**

### **Congressional District 10 – Central Savannah River Area**





**CR 82/BETHANY CHURCH ROAD @ NORTH FORK OGEECHEE RIVER  
Bridge Replacement in Taliaferro County  
Congressional District 10 – Central Savannah River Area (Continued)**

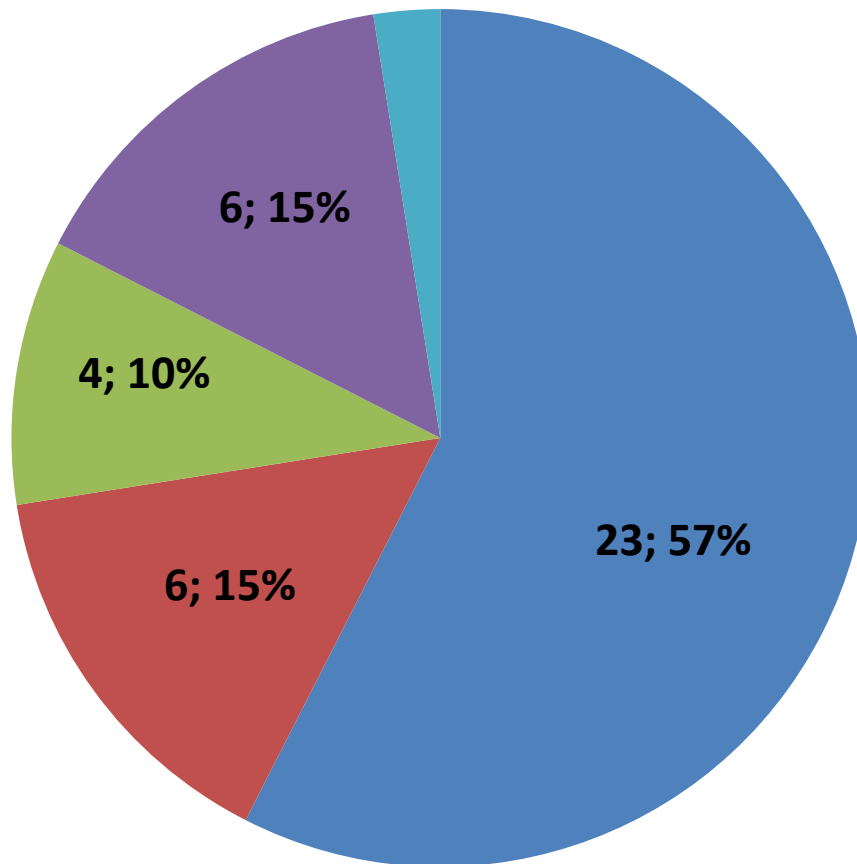


# Fiscal Year 2018 Letting Report

## Number of Projects

### November 2017 Letting

1; 3%



#### GDOT & Local

- Maintenance
- Safety
- Enhancements
- Bridges
- Roads

Total = 40

*Does not include LMIG Projects*

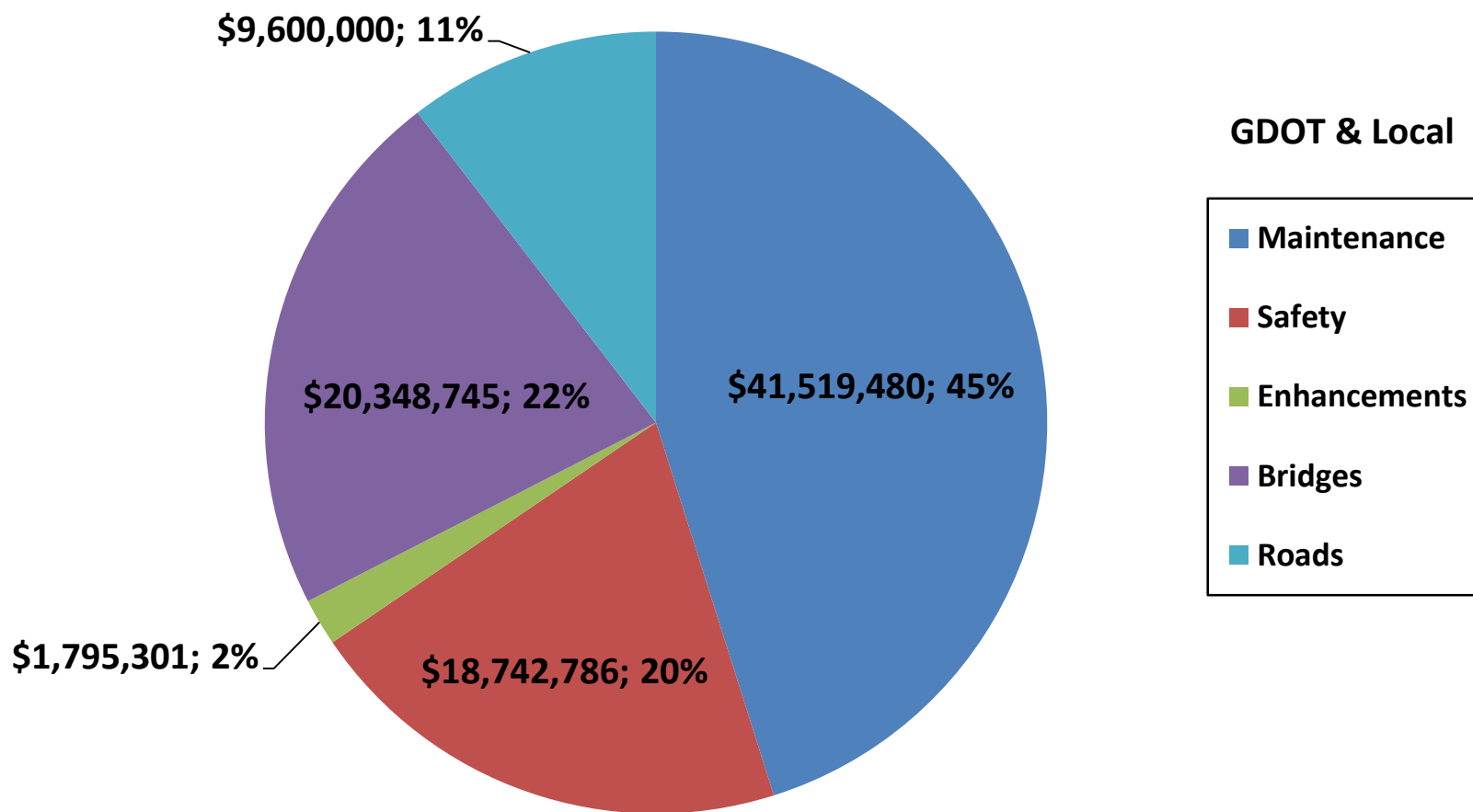
As of October 10, 2017

Source TPro – Chief Approved FY '17 Letting List

# Fiscal Year 2018 Letting Report

## Dollar Amount of Projects

### November 2017 Letting



***Does not include LMIG Projects***

**Total = \$92,006,312**

*As of October 10, 2017*

*Source TPro – Chief Approved FY '17 Letting List*

# Board Approval

# **Proposed Revisions To The Construction Work Program**

**Jay Roberts**  
**Director of Planning**

**October 19, 2017**



# November 2017 CWP Revision

## ***Board Revisions:***

1. P.I. No. 0010560, Chatham County, SR 26 from Johnny Mercer to Old US 80;  
Including Bull River and Lazaretto Creek  
Bridge Replacement/Reconstruction/Rehabilitation in Congressional District 1

Action: Change in Description

2. P.I. No. 422691-, Mitchell County, SR 3/SR 300/US 19 SBL at Raccoon Creek  
and Overflow south of Baconton  
Bridge Replacement in Congressional District 2

Action: Deletion from the program